

Rochdale
Development
Agency



Reasons Why Rochdale is Great for Manufacturing

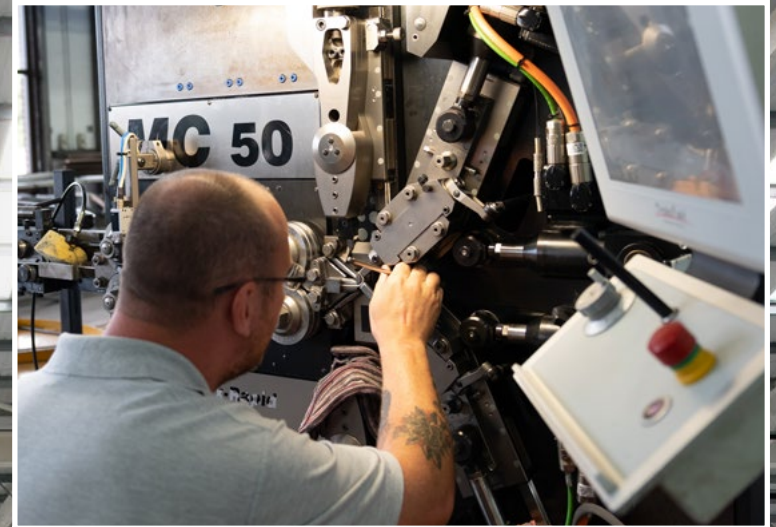
Your gateway to regional and global markets

Introduction

Manufacturing in Rochdale is a dynamic sector producing a wide variety of consumer and industrial products. The sector is reaping the benefits of continuing strong economic growth in Rochdale and Greater Manchester, among the fastest growing regional economies in the UK.

Rochdale has attracted global manufacturers because of its well-developed infrastructure, good access to capital, a large skilled labour pool and an entrepreneurial community.

Compared to other areas of the UK, Rochdale's manufacturing companies have competitive costs in key areas such as industrial property, salaries and business rates. Rochdale and Greater Manchester's highly trained, well educated, and motivated labour force provides the sector with the human capital to thrive and innovate.



1

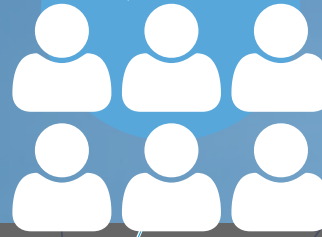
Great Location

Manufacturing in Rochdale is a dynamic sector producing a wide variety of consumer and industrial products. The sector is reaping the benefits of continuing strong economic growth in Rochdale and Greater Manchester, among the fastest growing regional economies in the UK.

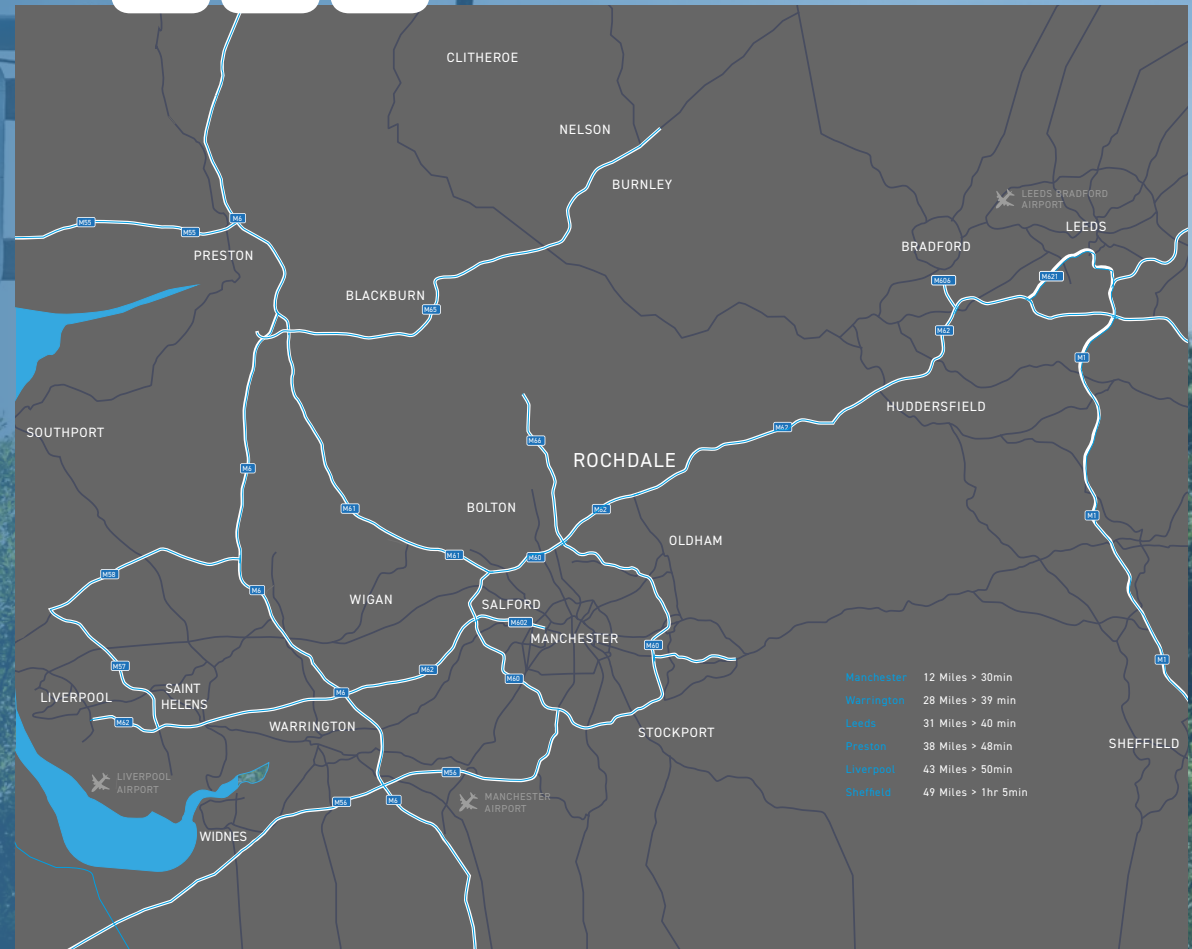
Rochdale has attracted global manufacturers because of its well-developed infrastructure, good access to capital, a large skilled labour pool and an entrepreneurial community.

Compared to other areas of the UK, Rochdale's manufacturing companies have competitive costs in key areas such as industrial property, salaries and business rates. Rochdale and Greater Manchester's highly trained, well educated, and motivated labour force provides the sector with the human capital to thrive and innovate.

75,200



employed in the manufacturing sector within 30mins of Rochdale¹



1. Source: BRES, 2016

Space To Grow

Analysis by the Manufacturers' organisation shows that manufacturing and engineering is worth £26.9bn to the North West economy, the biggest single region by output. Rochdale contributes around £685m to this figure. Future trends in automation, digitisation and advanced materials are expected to create up to £2.7 trillion of value worldwide, according to the World Economic Forum.

The Greater Manchester Combined Authority expects manufacturing in the region to grow by 30% over the next five years. The Manufacturing Advisory Service quarterly barometer suggests more than 50% of UK manufacturers are planning investment in new machinery or premises over the next six months and that manufacturers are increasingly exploring opportunities to export. Rochdale is in a perfect position to exploit this manufacturing upturn. The town has the highest amount of available industrial floorspace in the whole of Greater Manchester. The town boasts a wide range of cost-effective commercial industrial property and available sites for Design & Build with immediate access to the motorway network.



2.4
million
m² available
industrial floorspace

3

Competitive Cost Base

Rochdale manufacturers have a strong economic base to support their operations. The entrepreneurial business climate creates an environment where small, innovative and independent companies can flourish alongside established, multi-national businesses.

Companies will make operational savings of up to 25% in comparison to other key locations in the North West and UK.² High quality industrial space is currently up to 40% cheaper than other UK locations and less than half the price of London.³ Rochdale is a cost-effective location, representing a potential saving of over 20% on salaries compared to the national average. In regional terms, wage rates in Rochdale are more than 17% lower than in other locations⁴. The availability of a large pool of labour with engineering and manufacturing skills helps to keep wage rates sustainable, positioning Rochdale as a competitive location for manufacturing and engineering operations.

Case Studies

- **Holroyd Precision** make gear, rotor and thread grinding machines, and rotor milling machines. These are used to produce ultra-precision components for industries including oil and gas. The company was named an export champion by the Department for International Trade as 98% of their products are exported
- **Hanson Springs** manufacture valve springs that are used in flow control by the oil and gas, nuclear, rail and power generation industries. The company has two major production sites in Rochdale, one for cold coil spring production and the other for hot coil springs. The valve springs are produced in a wide range of materials including high nickel alloys, cobalt alloys, tungsten alloys, stainless steels and carbon steels.

- **Freudenberg Performance Materials** is a division of the German global technology conglomerate Freudenberg. The Rochdale plant (in Littleborough) covers all stages (including R&D) in the production of activated carbon materials and filters: coating, laminating conversion and finishing. These technical textiles are used in a number of applications including in medical and ostomy products. The site employs over 120 people.



UP TO
25%
Operational Savings
compared to other key
locations in the North West

2. ONS

3. Colliers / EGI

4. ASHE, ONS, 2018

An Educated, Skilled and Motivated Labour Force

Value-added manufacturing companies benefit from the high calibre of human resource available in Rochdale and Greater Manchester. Rochdale has a high concentration of experienced labour, with more than 10,000 employees working in manufacturing industries such as advanced materials, machinery, equipment manufacture, chemicals, and food and drink. This represents almost 10% of the local workforce, considerably higher than the national average (6.4%)⁵.

A large proportion of the local workforce possesses the mid-tier skills that are especially suitable for manufacturing. Over 40% of the 16+ population within the borough have Level 2, Level 3 or Apprenticeship qualifications⁶. Furthermore, educational institutions and training providers in Rochdale, such as Rochdale Sixth Form College and Hopwood Hall College, work closely with industry leaders to produce workers with the skills and knowledge required by industry.

Local Universities, particularly the University of Manchester's School of materials, have notable strengths in advanced materials performance and a proven track record of supporting Rochdale businesses in developing new material technologies. An annual student population in Greater Manchester of 47,330⁷ students in STEM subjects represents an important source of new talent for advanced manufacturing and engineering companies, producing graduates with the skills and knowledge required by industry. Rochdale also has a large pool of sub-contractors and workers in support services.

41%

of population have mid-tier skills ideal for manufacturing⁷

5. BRES, 2016

6. ONS, 2018

7. HESA, 2018

5

Excellent Business Support

Rochdale Development Agency was established in 1993 and is dedicated to promoting Rochdale as a central investment location while continuing to support and assist existing investors.

Actively encouraging and assisting investment and promoting the borough as one of the most business-friendly locations in the UK. The RDA has strong links with both the council and the commercial sector and has helped many manufacturing businesses relocate to the area including; CR Laurence, Takeuchi and Edmund Bell.

To make your business relocation as smooth as possible, the RDA is able to assist your business in many areas including commercial property searches, advice and guidance on expansion and relocation, advice on financial assistance and support with recruitment and training.

There is a rapid response to all investor enquiries and we allocate a single point of contact within the team to co-ordinate all aspects of your investment enquiry. Once a business has located to Rochdale we have a dedicated aftercare service. This ensures businesses here thrive. Research undertaken by the ONS, showed that business survival rates in Rochdale have consistently been higher than for Greater Manchester as a whole.

To ensure a comprehensive offer, we work with a wide range of partners which includes; MIDAS, The Growth Company, Greater Manchester Chamber of Commerce, property agents and other council services such as Planning and Economic Development Services.

Get in touch

To learn more about how we can assist you and your business, please contact the investment team.

The Rochdale Development Agency
Number One River Side, Smith St,
Rochdale OL16 1XU

Phone: **01706 927000**

Email: **info@investinrochdale.co.uk**

Rochdale
Development
Agency

